

Free-form lenses for modern life

Most personalized single vision lenses are calculated based on the assumption that they will be used only for distance vision. But, in real life, they are worn for all activities and to view objects at all distances.

The visual demands of today's single vision lenses wearers are closely linked to the intensive use of digital devices. This creates the demand for impeccable visual quality at near and intermediate distances.

Vandelay Endless Single Vision lenses were created for modern lifestyles. They are optimized and personalized for all visual distances, not just distance. Wearers experience exceptional vision for all activities.

Vandelay Endless Single Vision



Traditional Single Vision

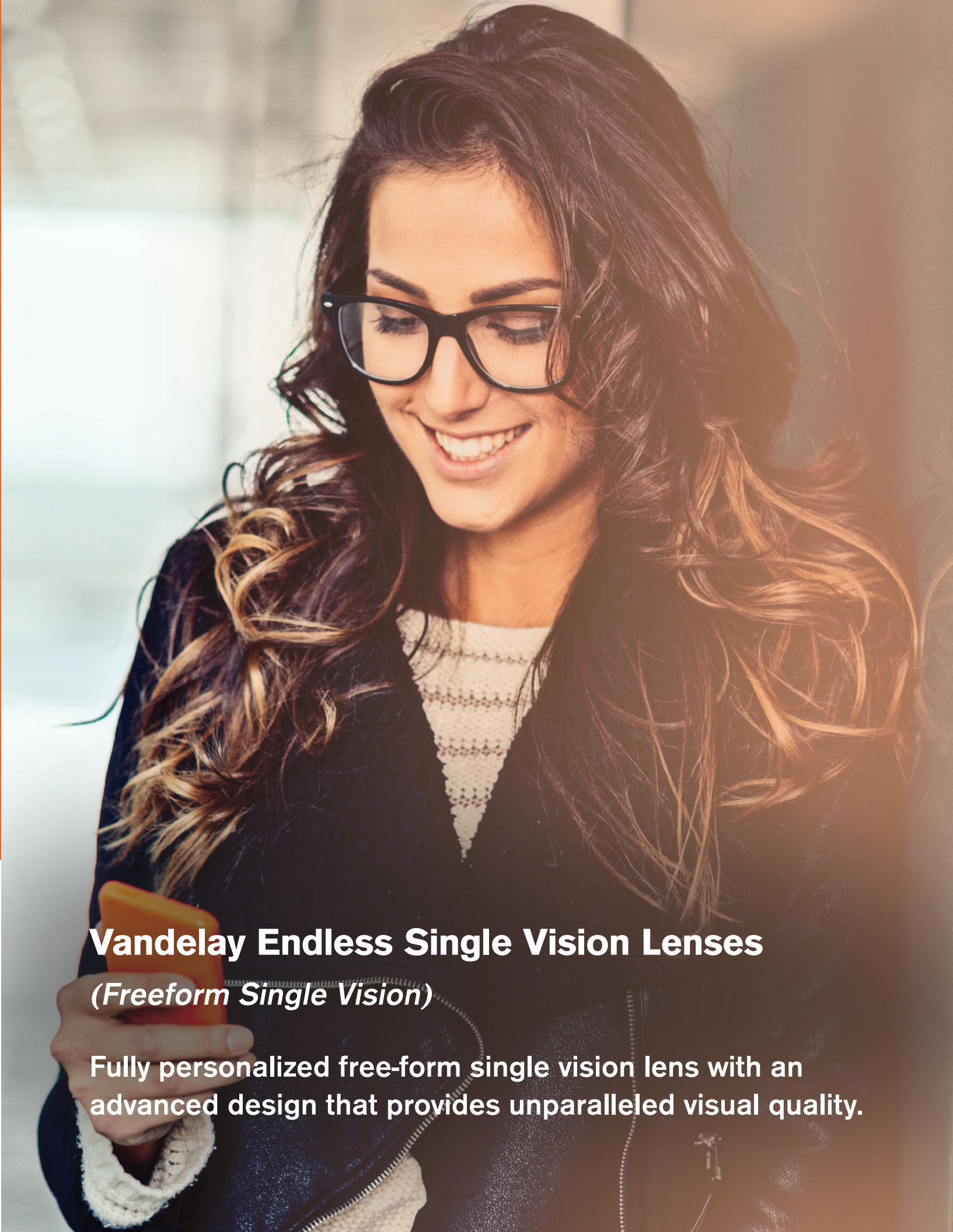


iot
See the difference
APPROVED PARTNER


PLASTIC PLUS
NO ONE DOES DIGITAL BETTER

Vandelay Endless Single Vision Lenses (Freeform Single Vision)

Fully personalized free-form single vision lens with an advanced design that provides unparalleled visual quality.



Vandelay Endless Single Vision

Use of electronic devices has transformed our lives. Time spent focusing on screens at close range has increased dramatically, creating the need to view objects at many distances with more agility and precision.

Vandelay Endless Single Vision lenses were designed for modern lifestyles. The visual quality, clarity, and comfort of these premium single vision lenses are impeccable. **Vandelay Endless Single Vision** lenses are more sophisticated and effective than a traditional personalized lens because the optimization process also considers the wearer's accommodative ability to focus at different distances.

In recent double-blind wearer trials, 100% of patients were very satisfied with **Vandelay Endless Single Vision** lenses. 96% reported excellent visual quality in distance, intermediate and near, and 96% said they provided excellent vision for use of electronic devices.



Precise focus in the accommodative object space

IOT Digital Ray-Path 2 Technology adds the intelligent use of the wearer's own accommodation to optimize the lens for a range of focal distances. **Vandelay Endless Single Vision** lenses have drastically reduced oblique aberrations across the entire visual field and offer the wearer greater comfort, impeccable visual quality, and more precise focus.

Ideal Wearer

Those looking for the most innovative solutions. Active wearers with demanding visual tasks. Single vision wearers who prefer wrapped frames and digitally connected wearers. Wearers with all types of prescription powers.

Features & Benefits

- Fully personalized single vision lens
- Technology: IOT Digital Ray-Path 2
- Impeccable visual quality, especially for high prescriptions & wrapped frames
- Comfortable & accurate focusing at all distances
- Near elimination of peripheral blur
- Superior visual quality for viewing digital devices