

COMPARATIVE REPORT DRIVE VS INMOTION™



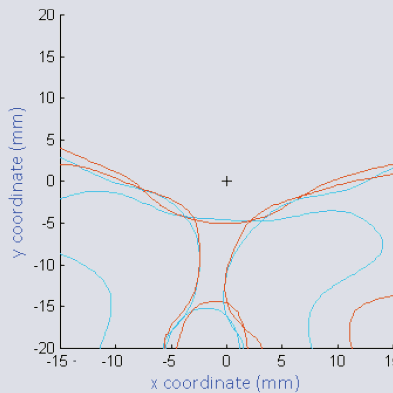
inMotion™ is a **new occupational progressive lens** developed to offer a quiet and pleasant drive both day and night. Keeping all the benefits from IOT's Drive lens, this new driving design also provides **wider distance and intermediate* visual fields** for a more agile and comfortable vision. The differentiating factor is its unique progression profile that incorporates a **night vision zone**, which improves visual quality while driving at night.

POWER MAPS

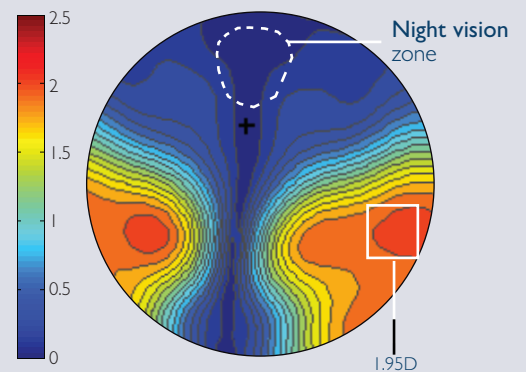
inMotion considers the specific visual requirements drivers need while driving. The cylinder power map has been completely readjusted (compared to the previous Drive design) to offer wider visual fields and minimum lateral distortion, providing a better and more precise focus inside and outside the vehicle.

28% wider distance zone
20% wider intermediate* zone
7% less unwanted astigmatism

INMOTION™ - MH18
Sheedy contour

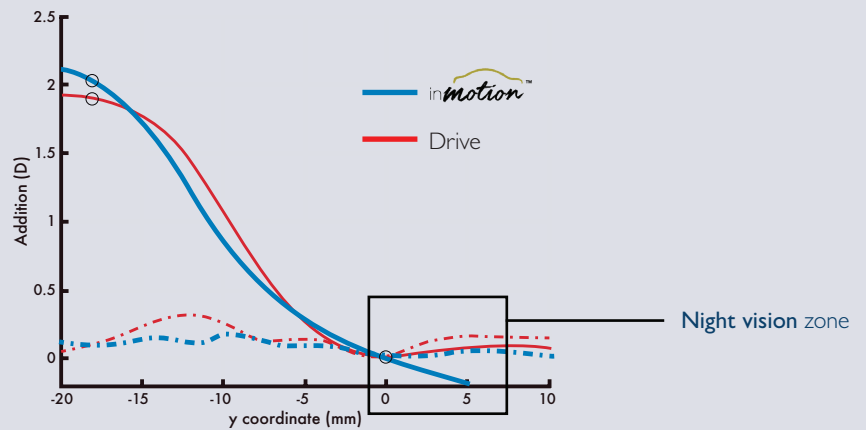


INMOTION™ - MH18
Cylinder Map



PROGRESSION PROFILE

The differentiating factor is its unique and innovative progression profile. inMotion incorporates an extra negative power (up to 0.25 D) to compensate night myopia. This creates a **night vision zone** that gives drivers a **superior visual quality**, and reduces the typical stress and visual fatigue caused by nighttime driving.



BENEFITS

inMotion provides:

POWER MAP OPTIMIZED FOR DRIVING

- Distance zone up to 28% wider
- Intermediate* zone up to 20% wider
- Unwanted astigmatism reduced by 7%

NIGHT VISION ZONE

- Reduction of night myopia
- Precise focus of distant objects on the road
- Reduction of visual fatigue while driving at night

PERSONALIZATION

- Oblique astigmatism minimization
- Excellent peripheral vision
- Thickness optimization

*Four meters intermediate vision

